



Fire Safety

SMOKE, HEAT, CO ALARMS



www.bgelectrical.uk



Fire Safety

Smoke, Heat, CO Alarms



Most fires at home start accidentally – and the effects can be devastating. A fire detection system provides an early warning – and time to escape – that really does save lives.

The British General range of alarms includes interconnected alarms for whole home coverage, and battery-operated alarms which operate independently. All alarms are third party approved and certified to relevant European standards to ensure peace of mind for both the installer and end user.

This range includes optical smoke alarms, heat alarms and CO alarms, offering a solution for various locations around your home for fast and effective detection of fire and dangerous levels of carbon monoxide.

IN THE RANGE

Mains Optical Smoke Alarm	135
Mains Heat Alarm	135
Mains CO Alarm	135
Battery Optical Smoke Alarm	136
Battery CO Alarm	136



BG Electrical products are guaranteed against faulty materials for a period of 10 years from date of delivery.

Features & Benefits



Battery operated or battery back up



Designed for ease of installation



Test and hush function

Mains operated inconnecting alarms

85dB(A) at 3 metres

Mains alarms BSI Kitemarked approved



What alarms do landlords need to install?

Every private rented property needs to be fitted with smoke alarms and carbon monoxide alarms (if applicable). On 1 October 2022, the regulations are being extended to cover social housing.

What type of alarm is required?

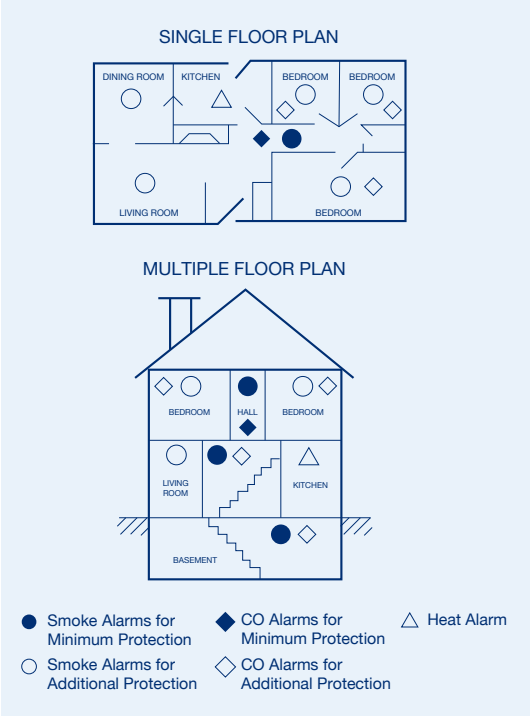
The regulations do not stipulate the type of alarms (such as main powered or battery powered), however where a battery powered option is selected, alarms with 'sealed for life' batteries rather than alarms with replaceable batteries are a better option.

At least one smoke alarm should be installed on every storey which is used in living accommodation. In general smoke alarms should be fixed to a ceiling in a circulation space i.e. a hall or landing.

A carbon monoxide alarm should be installed in every room which is used as living accommodation containing a fixed combustion appliance (excluding gas cookers).

Landlords should follow the individual manufacturer's instructions when installing the alarms. However, in general, carbon monoxide alarms should be positioned at head height, either on a wall or shelf, approximately 1-3 metres away from a potential source of carbon monoxide.

Fitting a heat alarm in your kitchen will give you warning of an increase in temperature caused by a fire but will not be set off by cooking fumes, therefore reducing the risk of false alarms.



Interconnected Alarms

When smoke and carbon monoxide (CO) alarms are interconnected, each alarm can now tell you when there's smoke or carbon monoxide in any room that has a smoke/CO alarm. A traditional alarm can alert you to the presence of smoke, fire or carbon monoxide, but it can only detect the area around it.

Interconnected alarms are safer

From February 2022 every home in Scotland must have interconnected fire alarms, and there should be adequate carbon monoxide protection. Interconnected means if one goes off, they all go off, so you will always hear an alarm wherever you are in your home. Interconnected smoke alarms are safer than standalone smoke alarms, because they let you know about an emergency sooner. Even if you're in the house, you may not be close to the area where the fire started.

SAFETY WARNING: Wiring should be in accordance with the latest edition of the IET regulations (BS 7671)

Interconnected Alarms Wiring



Mains Optical Smoke Alarm

The BG mains powered optical smoke alarm is ideal for detecting smoke from smouldering fires whilst minimising false alarms. This alarm can be interconnected with the wider range of BG interconnected alarms for complete coverage.

- Hard-wired optical smoke alarm wires directly into your home electric system
- Constant monitoring of the air for the presence of smoke
- Interconnecting: connect up to 24 heat and smoke alarms, or up to 12 alarms when including a CO alarm
- Dust cover (included) prevents contamination of the device during installation
- 9V battery backup (battery included) ensures the alarm will operate if mains power is lost
- Hush function allows the alarm to be temporarily silenced
- Test function, fault, and low battery warnings to assist with alarm maintenance
- Alarm volume 85dB(A) at 3m
- Class 2 alarm
- Certified to BS EN 14604:2005/AC:2001, BSI Kitemark number KM 762034
- UKCA and CE certified
- 10-year product lifetime

Product Code	Description	Inner Carton	Outer Carton
SDMOA	Mains optical alarm	6	48



SDMOA



KM 762034

Mains Heat Alarm

The BG mains powered heat alarm is ideal for use in kitchens and other rooms where smoke or steam may be present, and will alert you if there is a significant rise in temperature which may indicate a fire is about to break out. This alarm can be interconnected with the wider range of BG interconnected alarms for complete coverage.

- Hard-wired heat alarm wires directly into your home electric system
- Interconnecting: connect up to 24 heat and smoke alarms, or up to 12 alarms when including a CO alarm
- Dust cover (included) prevents contamination of the device during installation
- 9V battery backup (battery included) ensures the alarm will operate if mains power is lost
- Hush function allows the alarm to be temporarily silenced
- Test function, fault, and low battery warnings to assist with alarm maintenance
- Alarm volume 85dB(A) at 3m
- Class 2 alarm
- Certified to BS 5446-2:2003, BSI Kitemark number KM 645618
- UKCA and CE certified
- 10-year product lifetime

Product Code	Description	Inner Carton	Outer Carton
SDMHA	Mains heat alarm	6	48



SDMHA



KM 645618

Mains Carbon Monoxide Alarm

The BG mains powered CO alarm is designed to detect carbon monoxide gas from any source of combustion and will alert you when it detects dangerous levels of CO in the air. This alarm can be interconnected with the wider range of BG interconnected alarms for complete coverage.

- Hard-wired CO alarm wires directly in to your home electric system
- Interconnecting: connect up to 12 alarms
- Dust cover (included) prevents contamination of the device during installation
- 9V battery back up ensures the alarm will operate if mains power is lost
- Hush function allows the alarm to be temporarily silenced
- Test function, fault and low battery warnings to assist with alarm maintenance
- Supplied with base for straight forward installation
- Alarm volume 85dB(A) at 3m
- Type A alarm
- Certified to BS EN 50291-1:2018, BSI Kitemark number KM 616830
- UKCA and CE certified
- 10-year product lifetime

Product Code	Description	Inner Carton	Outer Carton
SDMCO	Mains carbon monoxide alarm	6	48



SDMCO



KM 616830


Battery Smoke & CO Alarms

Battery alarms can offer a flexible and convenient solution which is easy to install. Ideal for DIY installation and locations in residential properties where it is difficult to run cables.

Battery Optical Smoke Alarm

The BG battery operated optical smoke alarm is ideal for detecting smoke from smouldering fires whilst minimising false alarms.

- Constant monitoring of the air for the presence of smoke
- Low battery mode warns you when the alarm needs replacing
- Suitable for ceiling or wall mounting
- Hush function allows the alarm to be temporarily silenced
- Test and false alarm functions
- Sealed in lithium battery
- Alarm volume 85dB(A) at 3m
- Certified to BS EN 14604:2005
- UKCA and CE certified
- 10-year product lifetime



SDLLSM

DO NOT PAINT

TEST HUSH

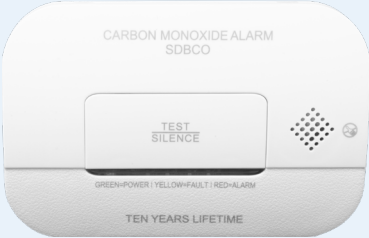
Icons: Smoke alarm, Interlinked, Hush, Bedroom, Living room

Product Code	Description	Inner Carton	Outer Carton
SDLLSM	Battery optical smoke alarms	6	48

Battery CO Alarm

The BG battery operated CO alarm will detect carbon monoxide gas from any source of combustion and will alert you when it detects dangerous levels of CO in the air.

- Low battery mode warns you when the alarm needs replacing
- Suitable for wall mounting
- Hush function allows the alarm to be temporarily silenced
- Test and false alarm functions
- 2 x AA Batteries (included)
- Type B alarm
- Alarm volume 85dB(A) at 3m
- Certified to BS EN 50291-1:2018 and EN 50291-1:2018
- UKCA and CE certified
- 10-year product lifetime



SDBCO

CARBON MONOXIDE ALARM SDBCO

TEST SILENCE

GREEN=POWER / YELLOW=FAULT / RED=ALARM

TEN YEARS LIFETIME

Icons: CO alarm, Interlinked, Bedroom, Living room

Product Code	Description	Inner Carton	Outer Carton
SDBCO	Battery optical CO alarms	6	48



Standards

2019 Revision to BS 5839-6 British Standards (Fire Detection and Fire Alarm Systems for Buildings)

BS 5839-6:2019+A1:2020 states that the level of protection to occupants needs to be directly related to the fire risk. However, it does list three categories to describe the level of protection the systems provide. Where and how many alarms are installed will affect how quickly a fire is detected – generally the higher the Category, the higher the level of protection.

LD1 – High protection

All areas where a fire could start (apart from bathrooms, shower rooms and toilets) e.g. hallways, landings, living room, kitchen (heat alarm), bedrooms, airing/metering cupboards, loft, garage.

Icons: House, Smoke alarm, Interlinked, Kitchen, Bedroom, Living room

LD2 – Medium protection

Escape routes and high-risk areas, e.g. hallways, landings, living room, kitchen (heat alarm).

Note: this is now the new minimum category for all rented properties and must include a heat alarm in the kitchen and a smoke alarm in principal habitable room(s).


Icons: Smoke alarm, Interlinked, Kitchen, Bedroom

LD3 – Minimum protection

Escape routes and circulation spaces, e.g. hallways and landings.

Note: This minimum category now only applies to owner occupied bungalow, flat, single-storey unit or maisonette with no floor level above 4.5m from ground level or owner-occupied two-storey house.

Icons: Smoke alarm, Interlinked



Scotland's Fire & Carbon Monoxide Safety Regulations

By February 2021, all homes should have:

- Smoke alarms in every circulation space on each storey, such as hallways and landings
- Smoke alarms installed in the room most frequently used for general daytime living purposes
- Heat alarms installed in every kitchen
- All smoke and heat alarms should be interlinked
- Carbon Monoxide alarms to be fitted where there is a fuel burning appliance or flue
- This applies to ALL homeowners and landlords

Carbon Monoxide Safety Standards

- Requires a BS EN 50291 CO alarm to be fitted when any new or replacement fuel appliance is installed. This covers any fuel burning appliance, including those that burn gas, oil, coal and wood. In Wales this also includes cooking appliances, In Scotland and Northern Ireland this excludes cookers.
- Alarms can be mains or battery powered. Where battery powered alarms are used, the batteries should last for the lifetime of the alarm.
- CO alarms should be located in the room with the appliance, or if it is an enclosed boiler, just outside the enclosure. They should also be fitted in any room that has a flue running through it.



UK:

HEAD OFFICE:

Email: info@jacobus.com

London plc, Capital House
100 Broad Street, London
England, SE1 1LN

DISTRIBUTION CENTRE:

Tel: +44 (0)1845 230 100

Email: uk_sales@jacobus.com

London plc
London Distribution Centre
Belford Park 1, Tolsted
Bognor Regis, England, PO22 8ED

FRANCE:

Email: f_sales@jacobus.com

ITALY:

Email: i_sales@jacobus.com

SPAIN:

Tel: +34 90329 66 76

Email: es_sales@jacobus.com

News Industries LTD

C/ Barrocas 1-6

28002 Madrid

Spain (Spain)

MIDDLE EAST & AFRICA:

Tel: +971 4 559 1987

Email: mea_sales@jacobus.com

London Middle East FZCO
Bldg. 418, Office 340
PO Box 271126, DAFRA
Dubai, UAE

ASIA PACIFIC:

JAPANESE:

Tel: +81 (0) 3 572 0287 0288

Email: asia_sales@jacobus.com

No. 108, Shuangqing Road
Qiyao Industrial Park, Jiangsu
Zhangji, China, PC 21021

HONGKONG:

Email: hk_sales@jacobus.com

UNITED STATES:

Email: us_sales@jacobus.com

MEXICO & LATIN AMERICA:

Tel: +52 (0) 555 9000 1401

Email: latam@jacobus.com

United States:

4810 West Chapman St. Box 1001

Col. Fiel, San Agustin

San Pedro de Garza Garcia

NL, Mexico CP 66278

TECHNICAL SUPPORT:

Tel: +44 (0) 1845 230 100

Email: technical.support@jacobus.com

Lines open Monday to Friday

8.30am to 5pm, with emergency phone
service outside these hours.

