



GRID

— MODULAR WIRING ACCESSORIES —



www.bg-nexusgrid.uk

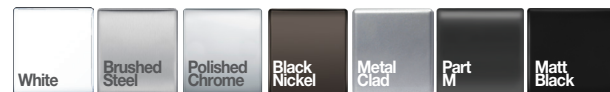


Nexus Grid Modular System

Ideal for domestic, commercial and industrial applications, and allows you to build your own module configurations with a variety of combinations and finishes.

The range benefits aesthetically from having no visible plastic around the switches. Grid is also designed to be easy to install with a cantilever module to frame installation and interchangeable rockers to provide flexibility.

Nexus Grid is available in Nexus Metal, White Moulded, Screwless Flatplate, Metal Clad, Part M and Evolve ranges – 15 stocked finishes in total.



Evolve



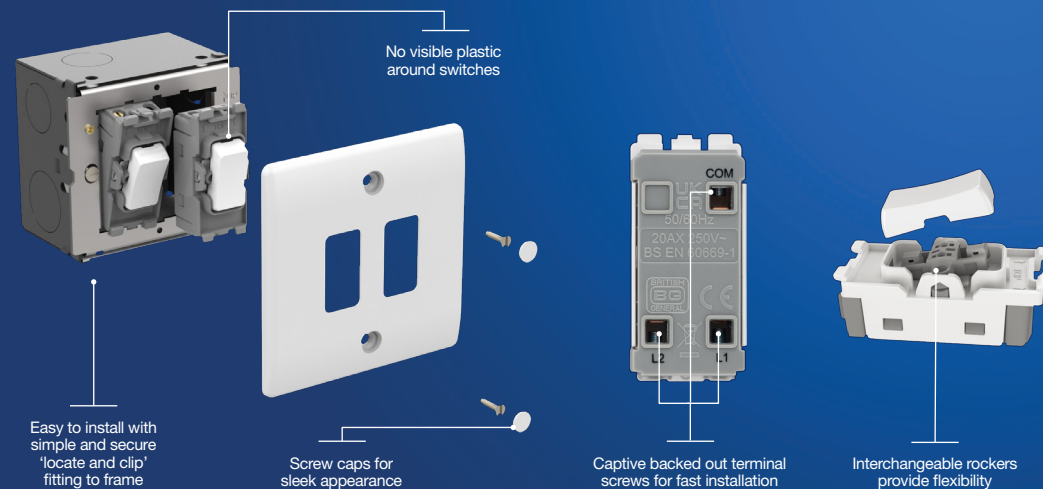
IN THE RANGE

20 Amp Modules	44
Fan Isolator Modules	45
Dimmer Modules	45
Indicator Modules	46
Fused Modules	46
Flex Outlet Modules	46
Blank Modules	46
Front Plates	47
Grid Frames	49
Boxes	49
Rockers	50



BG Electrical products are guaranteed against faulty materials and workmanship for a period of 25 years from date of delivery.

Features & Benefits



*Anti-microbial properties for white moulded

Quick & Easy to install

Step 1

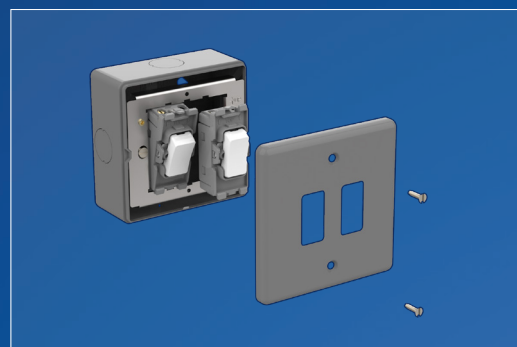
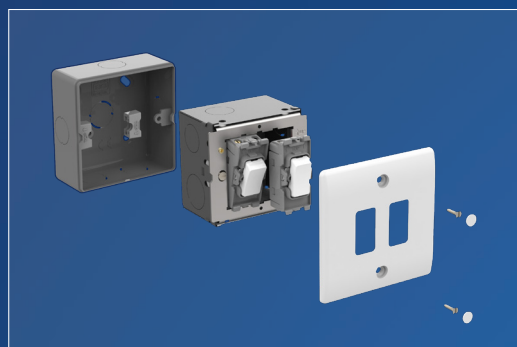
Fit and secure appropriate mounting box and frame:

- Cable should be protected by using grommets or conduit in the rear box cable entries.
- Pull cabling through frame and strip insulation accordingly.
- Ensure an earth connection between frame and box.
- Systematically terminate cables into each module.
- For Metal Clad installations the grid frames should have the spacers, supplied with the front-plate, positioned over the rear box lugs to locate the frame at the correct height.

Step 2

Fit modules to frame:

- Locate the smaller central tab of the module into the notch of the frame with the larger central tab behind the frame and pivot upwards and clip into place.
- Frames should be fitted to the wall box using the fixing screws provided. Check the vertical position, and tighten frame screws securely. (Do not over tighten).
- Attach the front-plate using the fixing screws provided or attach screwless plates to the fixing points provided. For Screwless installations please see the additional assembly notes.

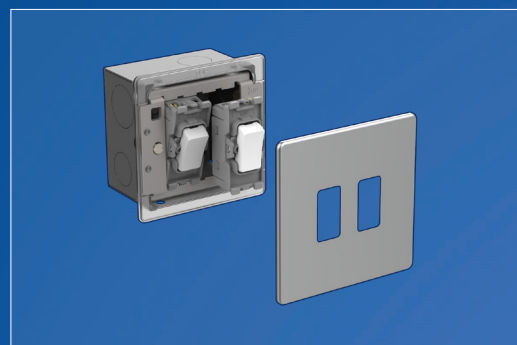


Screwless Flatplate Assembly:

When fitting one or three modules to the Screwless Flatplate grid frame, the blanking strips supplied must be fitted either side of the modules to prevent access to the wiring area.

It is recommended to decorate the wall before fixing the frontplate.

Position the frontplate with the removable notch located over the angled face of the gasket in the lower right-hand corner and with the clips located in the apertures, push to secure.



Antimicrobial Properties

White moulded Grid plates & modules

BG Nexus white moulded wiring accessories promote a healthy environment by facilitating up to 99% reduction in bacterial development on touch point surfaces. Manufactured using high grade thermoset Urea which effectively inhibits the growth of infectious diseases, including MRSA, E-Coli, Salmonella and Klebsiella Pneumonia bacteria.



20 Amp 20AX Modules

- Simple secure 'locate & clip' fitting to frame
- Alternative printed rocker covers available
- Clearly marked terminals with backed out captive screws for easy installation
- Terminal capacity 4 x 1.0mm², 4 x 1.5mm², 2 x 2.5mm² & 1 x 4.0mm²
- Manufactured to BS EN 6609-2-1
- Minimum mounting box depth 25mm
- 20 Amp, 20AX inductive rated



White	Polished Chrome	Brushed Steel	Black Nickel	Matt Black	Evolve White	Evolve Black	Description	Inner Carton	Outer Carton
R12	RPC12	RBS12	RBN12	RFB12	RPCDW12	RPCDB12	2 way, single pole	10	100
R13	RPC13	RBS13	RBN13	RFB13	RPCDW13	RPCDB13	Intermediate	10	100
R14	RPC14	RBS14	RBN14	RFB14	RPCDW14	RPCDB14	1 way retractive, SP (PRESS)	10	100

20 Amp 20AX Modules – 3 Position

- Simple secure 'locate & clip' fitting to frame
- Clearly marked terminals with backed out captive screws for easy installation
- Terminal capacity 4 x 1.0mm², 4 x 1.5mm², 2 x 2.5mm² & 1 x 4.0mm²
- Manufactured to BS EN 6609-2-1
- Minimum mounting box depth 25mm
- 20 Amp, 20AX inductive rated



White	Polished Chrome	Brushed Steel	Black Nickel	Matt Black	Evolve White	Evolve Black	Description	Inner Carton	Outer Carton
R12C	RPC12C	RBS12C	RBN12C	RFB12C	RPCDW12C	RPCDB12C	2 way, single pole, centre off	10	100
R14C	-	RBS14C	-	-	-	-	2 way retractive, SP, centre off	10	100

20 Amp Double Pole Modules

- Double pole switching
- Simple secure 'locate & clip' fitting to frame
- Alternative printed rocker covers available
- Clearly marked terminals with backed out captive screws for easy installation
- Terminal capacity 4 x 1.0mm², 4 x 1.5mm², 2 x 2.5mm² & 1 x 4.0mm²
- Manufactured to BS EN 60669-2-1
- Minimum mounting box depth 25mm
- 20 Amp, 20AX inductive rate



White	Polished Chrome	Brushed Steel	Black Nickel	Matt Black	Evolve White	Evolve Black	Description	Inner Carton	Outer Carton
R30	RPC30	RBS30	RBN30	RFB30	RPCDW30	RPCDB30	20A double pole	10	100
R31	-	-	-	-	-	-	20A double pole with LED indicator	10	100

20 Amp 20AX Secret Key Modules

- Supplied with key, spare keys available
- Clearly marked terminals with backed out captive screws for easy installation
- Terminal capacity 4 x 1.0mm², 4 x 1.5mm², 2 x 2.5mm² & 1 x 4.0mm²
- Manufactured to BS EN 60669-2-1
- Minimum mounting box depth 25mm
- 20 Amp, 20AX inductive rated



White	Polished Chrome	Brushed Steel	Black Nickel	Matt Black	Evolve White	Evolve Black	Description	Inner Carton	Outer Carton
R12KY	RPC12KY	RBS12KY	RBN12KY	RFB12KY	RPCDW12KY	RPCDB12KY	2 way, single pole	10	100
R30KY	RPC30KY	RBS30KY	RBN30KY	RFB30KY	RPCDW30KY	RPCDB30KY	20A double pole	10	100
R12EL	RPC12EL	RBS12EL	RBN12EL	RFB12EL	RPCDW12EL	RPCDB12EL	2 way, single pole – printed "EMG LTG TEST"	10	100
RSCKY	-	-	-	-	-	-	Spare secret key (pack of 10)	10	100

10 Amp 3 Pole Fan Isolator Modules

- Simple secure 'locate & clip' fitting to frame
- Triple pole switching design (can also be used for double pole applications)
- Clearly marked terminals with backed out captive screws for easy installation
- Terminal capacity 4 x 1.0mm², 4 x 1.5mm², 2 x 2.5mm² & 1 x 4.0mm²
- Manufactured to BS EN 60669-2-1
- Minimum mounting box depth 25mm
- 10 Amp rated



White	Polished Chrome	Brushed Steel	Black Nickel	Matt Black	Evolve White	Evolve Black	Description	Inner Carton	Outer Carton
R15	RPC15	RBS15	RBN15	RFB15	RPCDW15	RPCDB15	3 pole fan isolator	10	100

Dimmer Modules

- Intelligent trailing edge dimmer module
- Soft start, smooth dimming control and silent operation
- 2 Way push on/off with rotary control
- Overload protection
- Suitable for LED, Halogen, CFL and Incandescent lamps
- Clearly marked terminals with backed out captive screws for easy installation
- Terminal capacity 4 x 1.0mm², 4 x 1.5mm², 2 x 2.5mm² & 1 x 4.0mm²
- Manufactured to BS EN 60669-2-1
- Minimum mounting box depth 25mm
- 200-250V AC



Load Rating (Max/Min per module)			
Dimmable LED	5-100W	Halogen	20-200W
Tungsten/Incandescent	5-200W	Dimmable Compact Fluorescent	5-100W

White	Polished Chrome	Brushed Steel	Black Nickel	Matt Black	Evolve White	Evolve Black	Description	Inner Carton	Outer Carton
RDTR	RPCDTR	RBSDTR	RBDNTR	RFBDTR	RPCDWTR	RPCDBTR	2-way 200W trailing edge	10	100

Indicator Modules

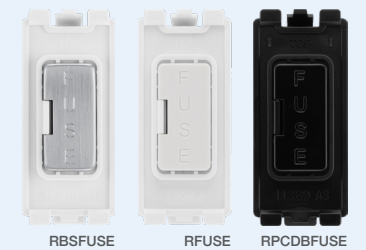
- LED light source, reliable and low power consumption
- Simple secure 'locate and clip' fitting to frame
- Clearly marked terminals with backed out captive screws for easy installation
- Terminal capacity 3 x 2.5mm², 2 x 4.0mm² & 1 x 6.0mm²
- Manufactured to BS 5733
- Minimum mounting box depth 25mm
- 250V



Product Code	Description	Inner Carton	Outer Carton
RINGR	Green	10	100
RINOR	Orange	10	100
RINRD	Red	10	100

Fused Modules

- Simple secure 'locate and clip' fitting to frame
- Terminal capacity 3 x 2.5mm², 2 x 4.0mm² & 1 x 6.0mm²
- Minimum mounting box depth 25mm
- Clearly marked terminals with backed out captive screws for easy installation
- Supplied with 13A fuse fitted to BS 1362



White	Polished Chrome	Brushed Steel	Black Nickel	Matt Black	Evolve White	Evolve Black	Description	Inner Carton	Outer Carton
RFUSE	RPCFUSE	RBSFUSE	RBNFUSE	RFBFUSE	RPCDWFUSE	RPCDBFUSE	Fuse holder	10	100

Flex Outlet Modules

- Cable entry with cord grip
- Suitable for cables with an outside diameter up to 10mm
- Manufactured to BS 5733
- Minimum mounting box depth 25mm



White	Polished Chrome	Brushed Steel	Black Nickel	Matt Black	Evolve White	Evolve Black	Description	Inner Carton	Outer Carton
RFLEX	RPCFLEX	RBSFLEX	RBNFLEX	RFBFLEX	RPCDWFLEX	RPCDBFLEX	Flex outlet (up to 10mm)	10	100

Blank Modules

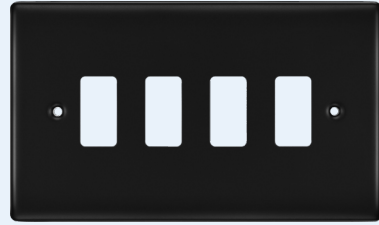
- Ideal for inserting in to unused Grid apertures
- Simple secure 'locate & clip' fitting to frame



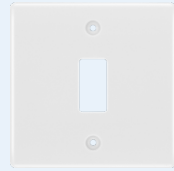
White	Polished Chrome	Brushed Steel	Black Nickel	Matt Black	Evolve White	Evolve Black	Description	Inner Carton	Outer Carton
RBLNK	RPCBLNK	RBSBLNK	RBNBLNK	RFBLNK	RPCDWBLENK	RPCDBBLNK	Blank module	10	100

Front Plates – Nexus Moulded & Nexus Metal

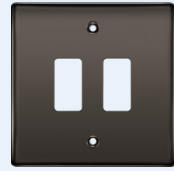
- Front-plates match the power products for the White Moulded & Nexus Metal ranges
- No visible plastic around rockers
- White plates supplied with covers to conceal fixing screws
- Metal plates fitted with moisture control gasket
- Brushed steel with anti-fingerprint lacquer
- Easy to install, supplied with fixing screws
- Anti-Microbial properties on white moulded Grid plates



RNFB4



R81



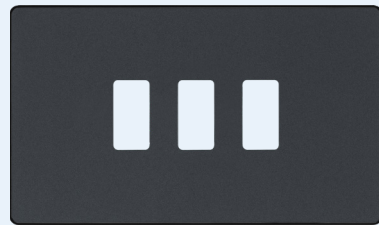
RNBN2



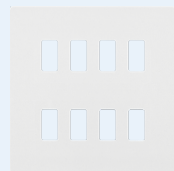
White	Polished Chrome	Brushed Steel	Black Nickel	Matt Black	Description	Inner Carton	Outer Carton
R81	RNPC1	RNBS1	RBNB1	RNFB1	1 module, square	20	200
R82	RNPC2	RNBS2	RBNB2	RNFB2	2 module, square	20	200
R83	RNPC3	RNBS3	RBNB3	RNFB3	3 module, rectangular	10	100
R84	RNPC4	RNBS4	RBNB4	RNFB4	4 module, rectangular	10	100
R86	RNPC6	RNBS6	RBNB6	RNFB6	6 module, square	10	100
R88	RNPC8	RNBS8	RBNB8	RNFB8	8 module, square	10	100
R89	-	RNBS9	-	-	9 module, rectangular	10	100
R812	-	RNBS12	-	-	12 module, rectangular	10	100

Front Plates – Evolve

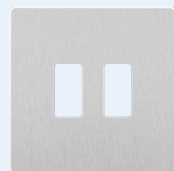
- Front-plates match the standard Evolve range
- Flat profile with rounded corners
- Clip on/off front-plates allow for removal during redecoration projects
- Plate perimeter colour to match Grid module
- Front plate edge colour: W = white, B = black, e.g. RPCDCL2W, or RPCDDB1B



RPCDDB1B



RPCDCL8W



RPCDDB2W



RPCDDB1B

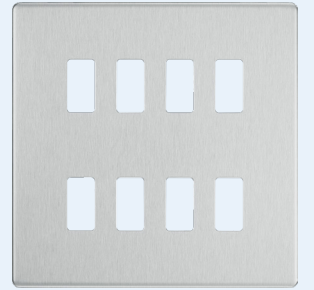
Pearlescent White	Brushed Steel	Matt Grey	Matt Black	Matt Blue	Polished Copper	Satin Brass	Black Chrome	Description	Inner Carton	Outer Carton
RPCDCL1W	RPCDDB1W	RPCDDB1G	RPCDDB1B	RPCDDB1B	RPCDDB1C	RPCDDB1B	RPCDDB1B	1 module, square	20	200
RPCDCL2W	RPCDDB2W	RPCDDB2G	RPCDDB2B	RPCDDB2B	RPCDDB2C	RPCDDB2B	RPCDDB2B	2 module, square	20	200
RPCDCL3W	RPCDDB3W	RPCDDB3G	RPCDDB3B	RPCDDB3B	RPCDDB3C	RPCDDB3B	RPCDDB3B	3 module, rectangular	10	100
RPCDCL4W	RPCDDB4W	RPCDDB4G	RPCDDB4B	RPCDDB4B	RPCDDB4C	RPCDDB4B	RPCDDB4B	4 module, rectangular	10	100
RPCDCL6W	RPCDDB6W	RPCDDB6G	RPCDDB6B	RPCDDB6B	RPCDDB6C	RPCDDB6B	RPCDDB6B	6 module, square	10	100
RPCDCL8W	RPCDDB8W	RPCDDB8G	RPCDDB8B	RPCDDB8B	RPCDDB8C	RPCDDB8B	RPCDDB8B	8 module, square	10	100

Front Plates – Screwless Flatplate

- Front-plates match the standard Screwless Flatplate range
- Flat profile with rounded edges
- Clip on/off frontplates allow for removal during redecoration projects
- No visible plastic around rockers
- Brushed steel with anti-fingerprint lacquer
- 1, 3, 6g front-plate supplied with grid blanks (Screwless only)



RFPC2



RFBS8

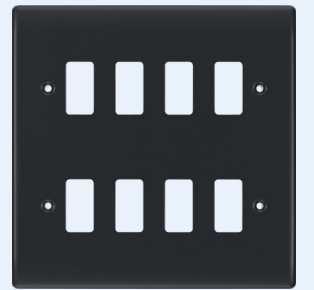
Polished Chrome	Brushed Steel	Black Nickel	Matt Black	Description	Inner Carton	Outer Carton
RFPC1	RFBS1	RFBN1	RFFB1	1 module, square	20	200
RFPC2	RFBS2	RFBN2	RFFB2	2 module, square	20	200
RFPC3	RFBS3	RFBN3	RFFB3	3 module, rectangular	10	100
RFPC4	RFBS4	RFBN4	RFFB4	4 module, rectangular	10	100
RFPC6	RFBS6	RFBN6	RFFB6	6 module, square	10	100
RFPC8	RFBS8	RFBN8	RFFB8	8 module, square	10	100

Front Plates – Part M

- Front plates match the power products of the Part M range
- No visible plastic around rockers
- Grid solutions allow a wider range of solutions to enable compliance of requirements for Part M1
- Easy to install, supplied with fixing screws



RPM3



RPM8

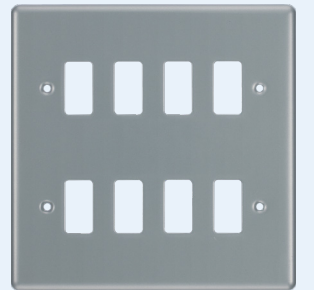
Product Code	Description	Inner Carton	Outer Carton
RPM1	1 module, square	20	200
RPM2	2 module, square	20	200
RPM3	3 module, rectangular	10	100
RPM4	4 module, rectangular	10	100
RPM6	6 module, square	10	100
RPM8	8 module, square	10	100

Front Plates – Metal Clad

- Front plates match the power products of the Metal Clad range
- A rugged, scratch resistant range, suitable for everyday use in commercial and industrial environments
- No visible plastic around rockers
- Suitable for flush wall mounting, or surface mount with metal clad boxes
- Easy to install, supplied with fixing screws



RMC1



RMC8

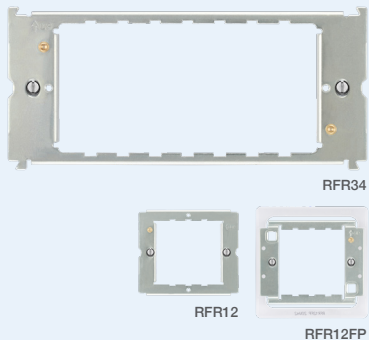
Product Code	Description	Inner Carton	Outer Carton
RMC1	1 module, square	20	200
RMC2	2 module, square	20	200
RMC3	3 module, rectangular	10	100
RMC4	4 module, rectangular	10	100
RMC6	6 module, square	10	100
RMC8	8 module, square	10	100

Grid Frames

- RFR12/34**
- Universal frame for Metal Clad, White Moulded, Nexus Metal & Part M front plates

- RFR12/34/68FP**
- These frames are only for the Screwless Flatplate versions
 - Fixed integrated plastic gasket to protect metal edges from moisture

- Common Features**
- Earth terminal(s) fitted as standard
 - Frames supplied with fixing screws for mounting



Screwed Plates	Screwless Flatplate Only	Evolve	Description	Inner Carton	Outer Carton
RFR12	RFR12FP	RFR12PCD	1 + 2 module frame	20	200
RFR34	RFR34FP	RFR34PCD	3 + 4 module frame	10	100
(Use – 2 x RFR34)	RFR68FP	RFR68PCD	6 + 8 module frame	5	50

Boxes

- Rugged, scratch resistant metal boxes suitable for everyday use in commercial and industrial environments
- Manufactured in heavy gauge steel for extra safety
- Multiple knock-out mounting box
- Earth terminal fitted as standard



Product Code	Description	Inner Carton	Outer Carton
MC501	1 + 2 module Grid	10	100
MC502	3 + 4 module Grid	5	50
MC503	6 + 8 module Grid	5	25
HGS68	6 + 8 module Grid	5	25
HGS912	9 + 12 module Grid	5	25

Boxes

- Replacement plate fixing screws
- Supplied in bags of 10



Product Code	Description	Inner Carton	Outer Carton
RFS10/10	Grid M3 x 10mm screws, pack of 10	100	1000
RFS10/10BN	Grid black nickel M3 x 10mm screws, pack of 10	100	1000

Rockers

- Replacement rockers available in all finishes
- Plastic – printed, metal – embossed
- Supplied in bags of 10
- Easy to fit on standard Grid switch modules



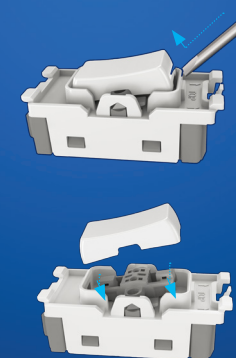
White	Polished Chrome	Brushed Steel	Black Nickel	Matt Black	Evolve White	Evolve Black	Description	Inner Carton	Outer Carton
RRHBW	RRHBPC	RRHBBS	RRHBBN	RRHBBF	RRHBPCDW	RRHBPCDB	HOB	10	100
RROVW	RROVPC	RROVBS	RROVBN	RROVBF	RROVPCDW	RROVPCDB	OVEN	10	100
RRFNW	RRFNPC	RRFNBS	RRFNBN	RRFNBF	RRFNPCDW	RRFNPCDB	FAN	10	100
RRMWW	RRMWPC	RRMWBS	RRMWBN	RRMWF	RRMWPCDW	RRMWPCDB	WASHING MACHINE	10	100
RRTDW	RRTDPC	RRTDBS	RRTDBN	RRTDFB	RRTDPCDW	RRTDPCDB	TUMBLE DRYER	10	100
RRFDW	RRFDPC	RRFDBS	RRFDBN	RRFDFB	RRFDPCDW	RRFDPCDB	FRIDGE	10	100
RRFFW	RRFFPC	RRFFBS	RRFFBN	RRFFBF	RRFFPCDW	RRFFPCDB	FRIDGE FREEZER	10	100
RRFZW	RRFZPC	RRFZBS	RRFZBN	RRFZBF	RRFZPCDW	RRFZPCDB	FREEZER	10	100
RRBLW	RRBLPC	RRBLBS	RRBLBN	RRBLBF	RRBLPCDW	RRBLPCDB	BOILER	10	100
RRMWW	RRMWPC	RRMWBS	RRMWBN	RRMWF	RRMWPCDW	RRMWPCDB	MICROWAVE	10	100
RRCHW	RRCHPC	RRCHBS	RRCHBN	RRCHBF	RRCHPCDW	RRCHPCDB	COOKER HOOD	10	100
RRWHW	RRWHPC	RRWHBS	RRWHBN	RRWHBF	RRWHPCDW	RRWHPCDB	WATER HEATER	10	100
RRWDISW	RRWDISPC	RRWDISBS	RRWDISBN	RRWDISBF	RRWDISPCDW	RRWDISPCDB	WASTE DISPOSAL	10	100
RRACW	RRACPC	RRACBS	RRACBN	RRACBF	RRACPCDW	RRACPCDB	AIR CON	10	100
RRDWW	RRDWPC	RRDWBS	RRDWBN	RRDWBF	RRDWPCDW	RRDWPCDB	DISH WASHER	10	100
RRHTW	RRHTPC	RRHTBS	RRHTBN	RRHTBF	RRHTPCDW	RRHTPCDB	HEATER	10	100
RRBELLW	RRBELLPC	RRBELLBS	RRBELLBN	RRBELLBF	RRBELLPCDW	RRBELLPCDB	Bell Symbol (Graphic)	10	100
RRWDW	RRWDPC	RRWDBS	RRWDBN	RRWDFB	RRWDPCDW	RRWDPCDB	WARMING DRAWER	10	100
RRWCW	RRWCPC	RRWCBS	RRWCBN	RRWCFB	RRWCPCDW	RRWCPCDB	WINE COOLER	10	100
RRUPW	RRUPPC	RRUPBS	RRUPBN	RRUPBF	RRUPPCDW	RRUPPCDB	Unprinted rocker	10	100
RRUPG	-	-	-	-	-	-	Unprinted graphite rocker (Part M)	10	100
RRUPRD	-	-	-	-	-	-	Unprinted red rocker	10	100
RRUPAB	-	-	-	-	-	-	Unprinted antique brass rocker	10	100

Replacement & Interchangeable Rockers

Replacement rockers – Switch modules are supplied with plain rockers, however a selection of pre-printed rockers are available.

To replace:

- Remove existing rocker by inserting screwdriver under rocker cap and lifting.
- Position replacement cap into aperture and clip into place ensuring text is correctly aligned in relation to top of module.



BRITISH BG GENERAL Wiring Accessories

A range of reliable contractor wiring accessories required for any installation

See page 128



**UK:****HEAD OFFICE:**Email: info@getdell.com/ukLisson Grove, Clarendon House
100 Brook Street, London
England, W1J 8LN**DISTRIBUTION CENTRE:**

Tel: +44 (0)1902 230 100

Email: uk_order@getdell.com/ukLisson Grove
Lisson Distribution Centre
Brook Road Park 1, Twickenham
Buckingham, England, TW2 8ED**FRANCE:**Email: f_order@getdell.com**ITALY:**Email: i_order@getdell.com**SPAIN:**

Tel: +34 90229 88 78

Email: es_order@getdell.com

Hewlett-Packard LTD

C/ Boleda de la Torre 1-6

28002 Madrid

España (Spain)

MIDDLE EAST & AFRICA:

Tel: +971 4 500 1887

Email: mea_order@getdell.comLisson Middle East PTEC
Bldg 418, Office 340
PO Box 271128, Dubai,
Dubai, UAE**ASIA PACIFIC:****JAPANESE:**

Tel: +81 (0) 3 574 3287 1000

Email: asia_order@getdell.comNo. 102, Rongsheng Road
Qiyao Industrial Park, Jiangsu
Zhangjiagang, China, PC 215621**HONGKONG:**Email: hk_order@getdell.com**UNITED STATES:**Email: us_order@getdell.com**MEXICO & LATIN AMERICA:**

Tel: +52 (0) 55 5555 1401

Email: latam@getdell.com

Luis de la Cruz

Av. L. de la Cruz, Oficinas de TI, No. 201

Cajal Pastel, San Agustín

San Pedro de las Cabañas

P.O., Mexico DF 06078

TECHNICAL SUPPORT:

Tel: +44 (0) 1902 230 128

Email: technical.support@getdell.com/uk

Lines open Monday to Friday

8.30am to 5pm, with emergency phone
service outside these hours.